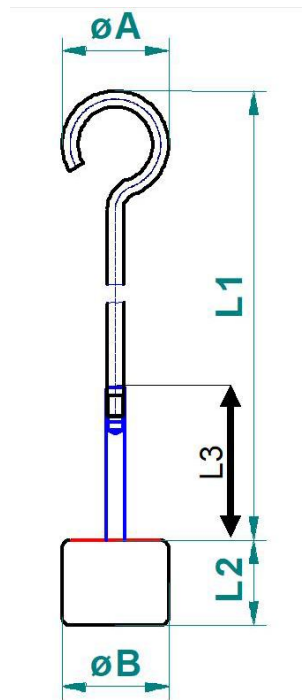


# 1 Trägerstangen Abmessungen / beam bar dimensions



| Typ /<br>Type | Nennwert /<br>Weight | L1<br>[mm] | L2<br>[mm] | L3*<br>[mm] | $\varnothing A$<br>[mm] | $\varnothing B$<br>[mm] | Material /<br>Material         |
|---------------|----------------------|------------|------------|-------------|-------------------------|-------------------------|--------------------------------|
| 347-445-100   | 10g                  | 108        | 5-5,5      | 60          | 20                      | 13                      | Aluminium /<br>Aluminum        |
| 347-075-100   | 100g                 | 230        | 10         | 150         | 32                      | 26                      | Edelstahl /<br>stainless steel |
| 347-095-100   | 500g                 | 625        | 38         | 380         | 40                      | 40                      |                                |
| 347-115-100   | 1 kg                 | 955        | 36         | 730         | 40                      | 60                      |                                |

\*L3:

Max. Aufnahmehöhe von Gewichten / max. height of weights

## 1.1 Grenzwerte / limits

| Art. Nr.    | Gewicht<br>Weight | X1** | X2*** |
|-------------|-------------------|------|-------|
| 347-445-100 | 10g               | 100g | 200g  |
| 347-075-100 | 100g              | 1kg  | 2kg   |
| 347-095-100 | 500g              | 10kg | 20kg  |
| 347-115-100 | 1 kg              | 10kg | 40kg  |

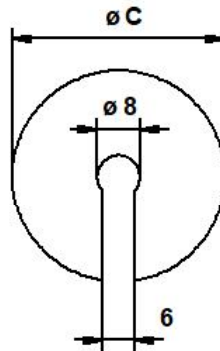
\*\*X1:

Größtes Einzelgewicht / biggest single weight

\*\*\*X2:

Max. Gesamtgewicht / max. total weight

## 2 Schlitzgewicht Abmessungen / slotted weight dimensions



| Typ / Type | Nennwert / weight | Ø C [mm] | Höhe / height [mm] | Material / material         |
|------------|-------------------|----------|--------------------|-----------------------------|
| T347-015-A | 1 g               | 13       | 2                  | Edelstahl / stainless steel |
| T347-025-A | 2 g               | 13       | 4                  |                             |
| T347-035-A | 5 g               | 18       | 4                  |                             |
| T347-045-A | 10 g              | 22       | 5                  |                             |
| T347-055-A | 20 g              | 27       | 6                  |                             |
| T347-065-A | 50 g              | 28       | 13                 |                             |
| T347-075-A | 100 g             | 33       | 18                 |                             |
| T347-085-A | 200 g             | 38       | 27                 |                             |
| T347-095-A | 500 g             | 48       | 40                 |                             |
| T347-115-A | 1 kg              | 80       | 28                 |                             |
| T347-125-A | 2 kg              | 80       | 57                 |                             |
| T347-135-A | 5 kg              | 100      | 88                 |                             |
| T347-145-A | 10 kg             | 100      | 175                |                             |

Technische Änderungen und Irrtum vorbehalten; alle Werte unterliegen einer Messtoleranz von max. fünf Prozent. / Technical changes and errors excepted; all values are subject to a measurement tolerance of at least five percent.